

Faculty of Mechanical Science and Engineering
Chair of Computational and Experimental Solid Mechanics

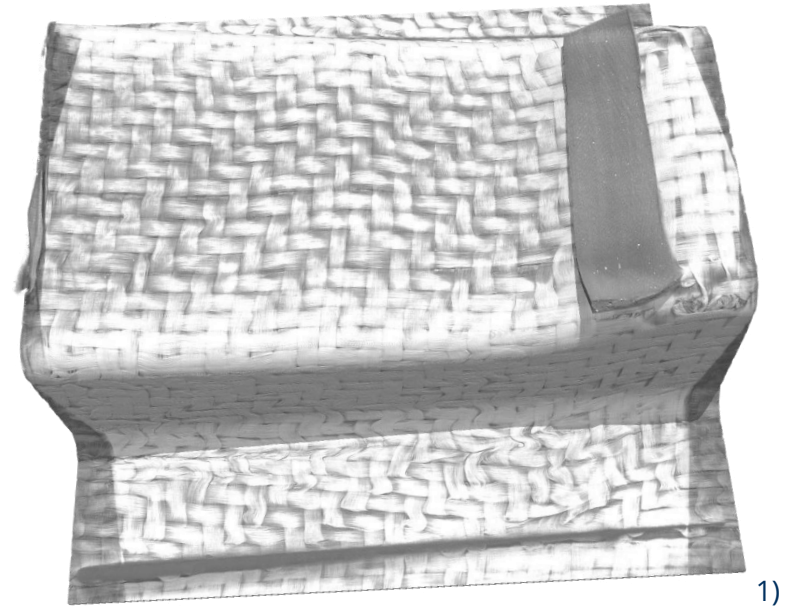
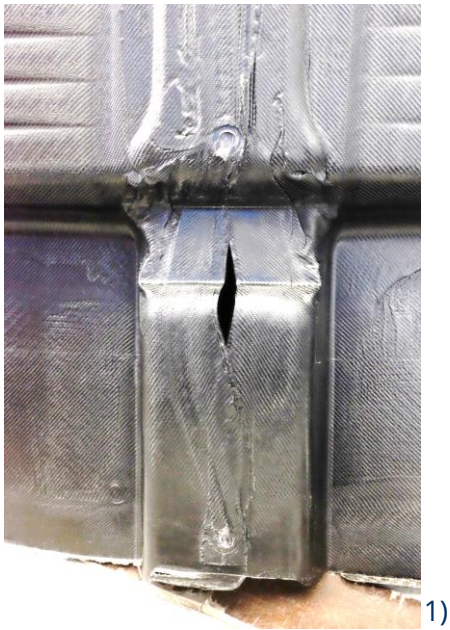
Jean-Paul Ziegs

Numerical Modeling of Single-Step Thermoforming of a Hybrid Metal/FRP Lightweight Structure

15th German LS-DYNA Forum 2018 // Bamberg // 15.-17.10.2018

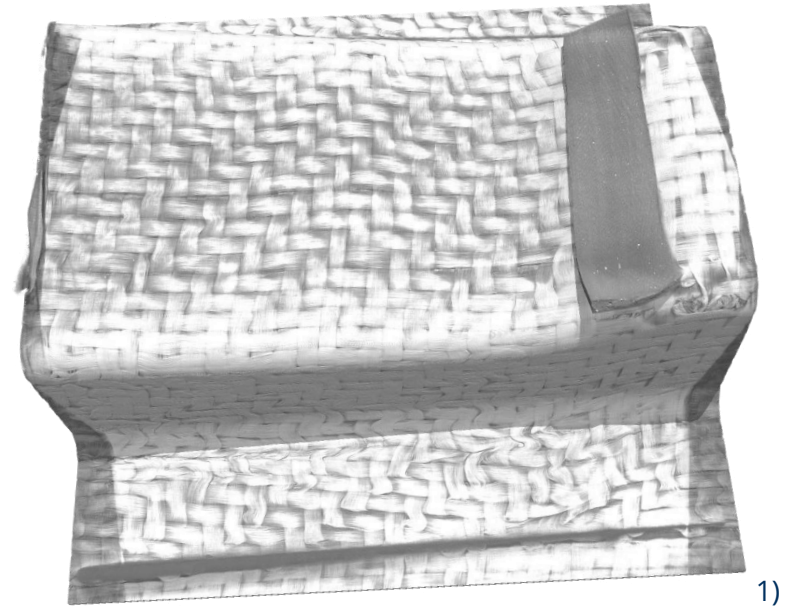
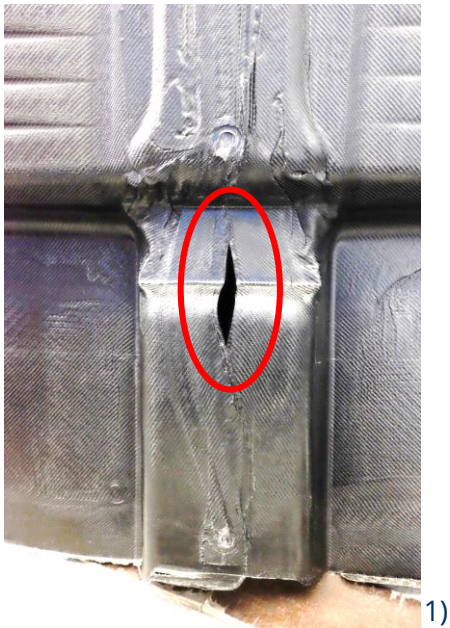


- Manufacturing process of hybrid workpieces characterized by “trial and error”



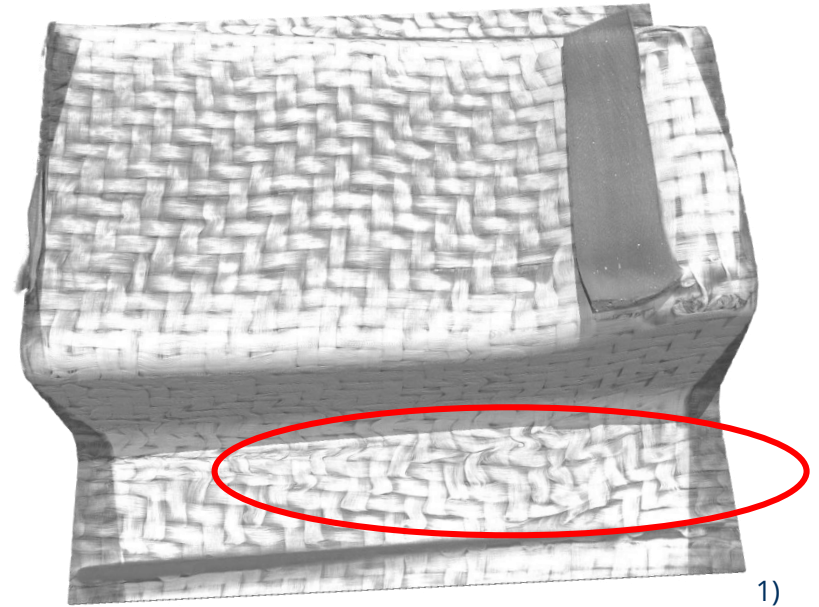
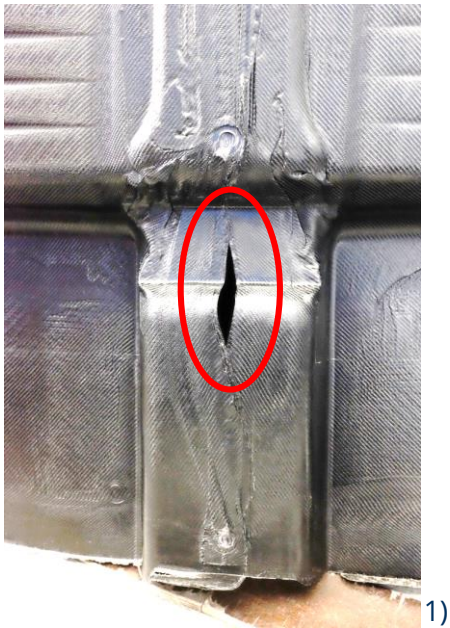
1) TU Dresden, ILK

- Manufacturing process of hybrid workpieces characterized by “trial and error”



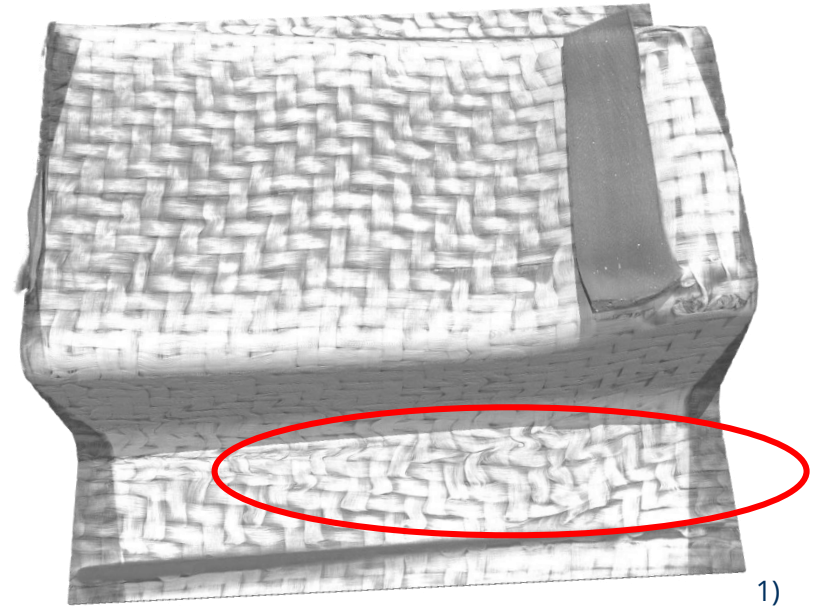
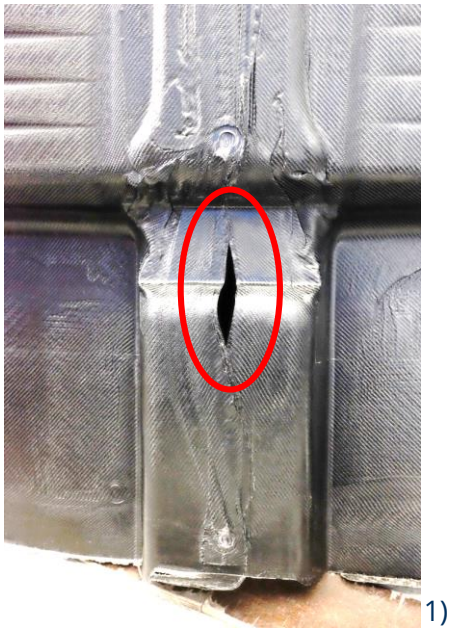
1) TU Dresden, ILK

- Manufacturing process of hybrid workpieces characterized by “trial and error”



1) TU Dresden, ILK

- Manufacturing process of hybrid workpieces characterized by “trial and error”



- Simulation of manufacturing processes to optimize process parameters

1) TU Dresden, ILK

Introduction and motivation

Process chain

Material modeling and parametrization

Process simulation and results

Summary

Introduction and motivation

Process chain

Material modeling and parametrization

Process simulation and results

Summary

Introduction and motivation

Process chain

Material modeling and parametrization

Process simulation and results

Summary

Introduction and motivation

Process chain

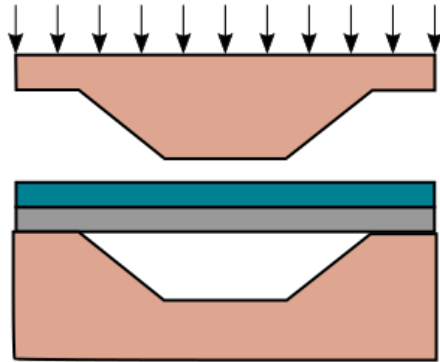
Material modeling and parametrization

Process simulation and results

Summary

Process chain

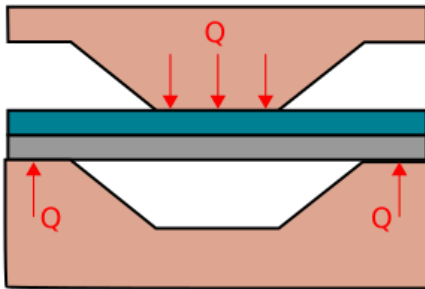
Manufacturing process



2) TU Dresden, IF

Process chain

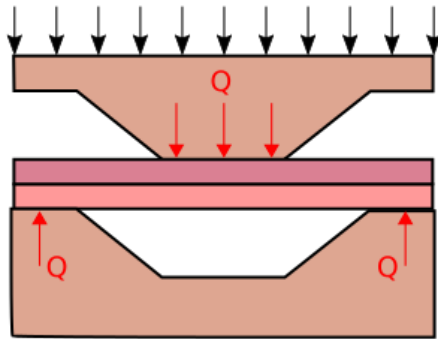
Manufacturing process



2) TU Dresden, IF

Process chain

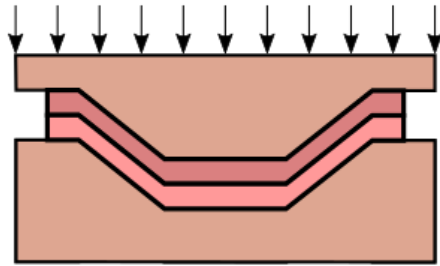
Manufacturing process



2) TU Dresden, IF

Process chain

Manufacturing process

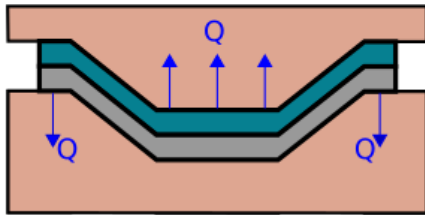


2)

2) TU Dresden, IF

Process chain

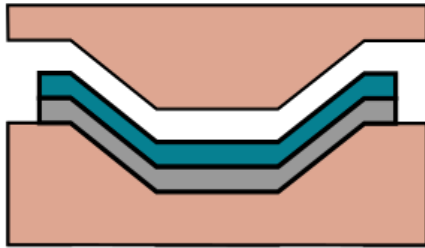
Manufacturing process



2) TU Dresden, IF

Process chain

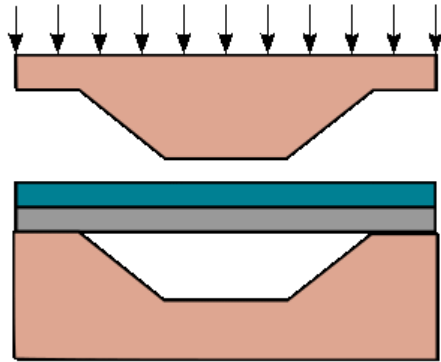
Manufacturing process



2) TU Dresden, IF

Process chain

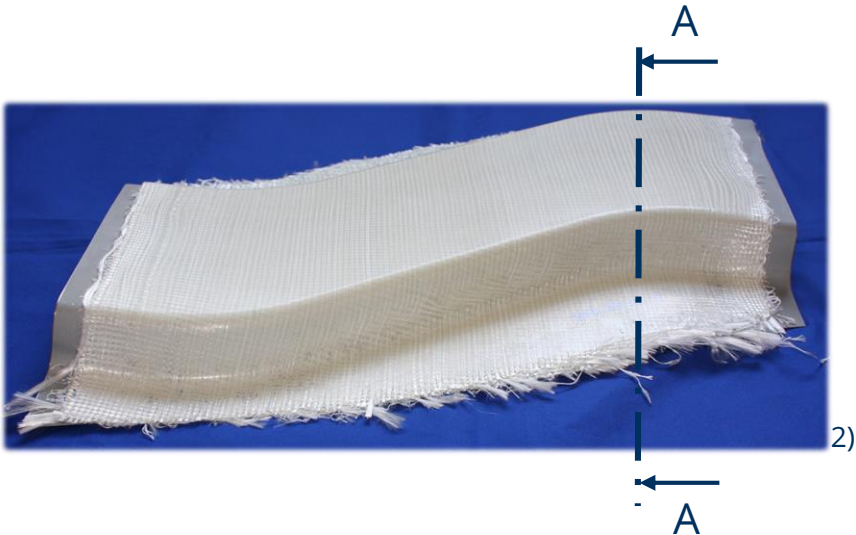
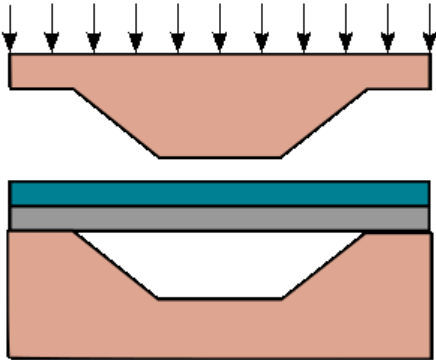
Manufacturing process



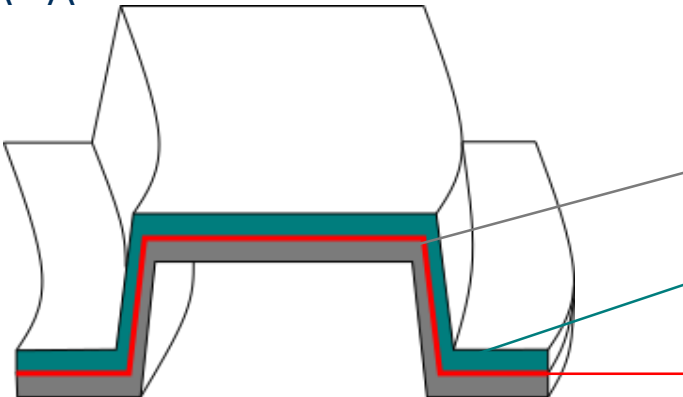
2) TU Dresden, IF

Process chain

Manufacturing process



A - A



Material modeling to predict behavior of:

Metal

Fiber-reinforced plastic

Interface

2) TU Dresden, IF

Material modeling and parametrization

➤ Metal (*MAT122-Hill_3R)

Metal sheet: DC05



3)

Constitutive law:

- Anisotropic elastic-plastic
- HILL48–yield criterion
- Temperature independent

Uniaxial tension tests for
parameter identification



3) ThyssenKrupp-Company presentation, February 2013

Material modeling and parametrization

➤ Metal (*MAT122-Hill_3R)

Metal sheet: DC05

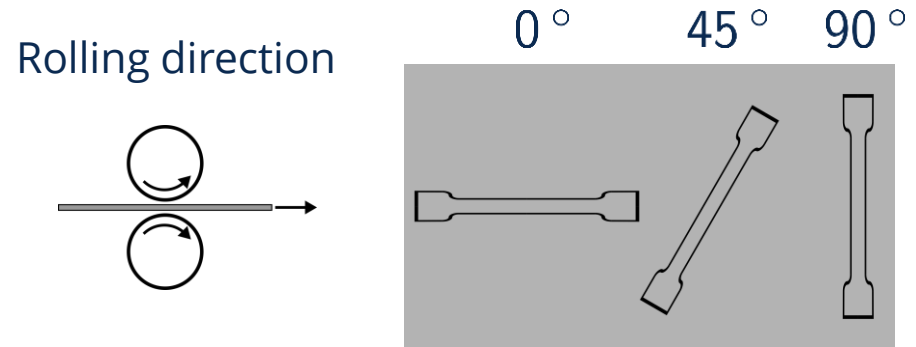


3)

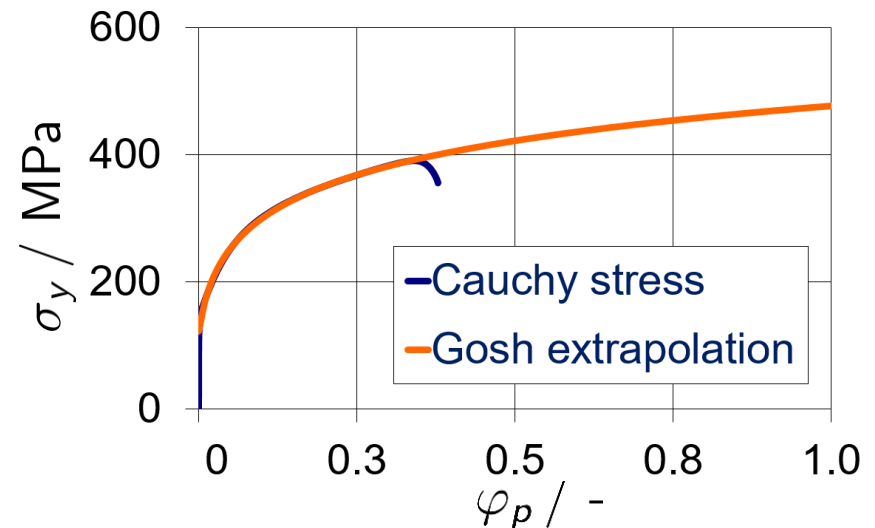
Constitutive law:

- Anisotropic elastic-plastic
- HILL48–yield criterion
- Temperature independent

Uniaxial tension tests for parameter identification



Parameter	E	ν	R_{00}	R_{45}	R_{90}
Value	207 GPa	0.28	1.88	1.4	2.23

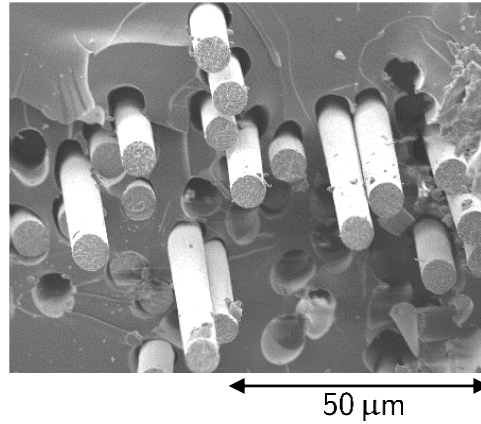


3) ThyssenKrupp-Company presentation, February 2013

Material modeling and parametrization

➤ FRP (*MAT249-Reinforced_Thermoplastic)

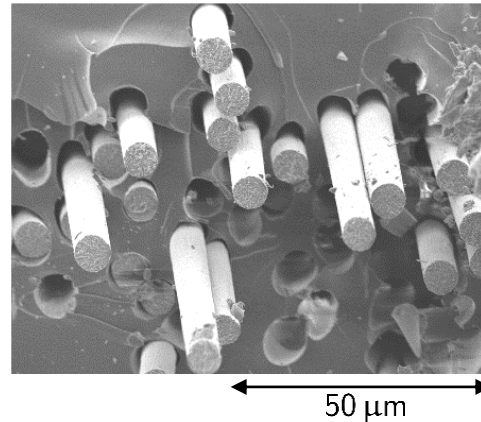
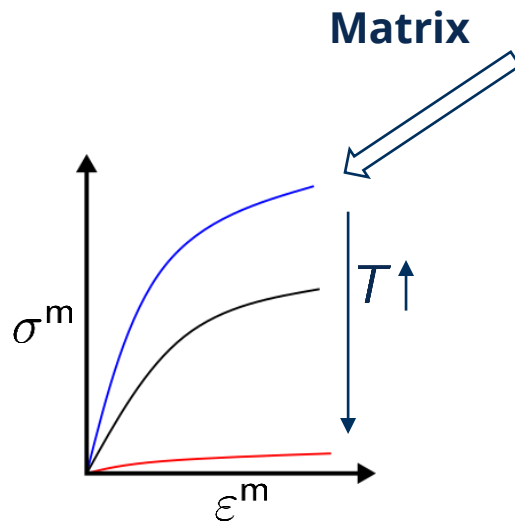
FRP material: CF-PA6.6



Material modeling and parametrization

➤ FRP (*MAT249-Reinforced_Thermoplastic)

FRP material: CF-PA6.6

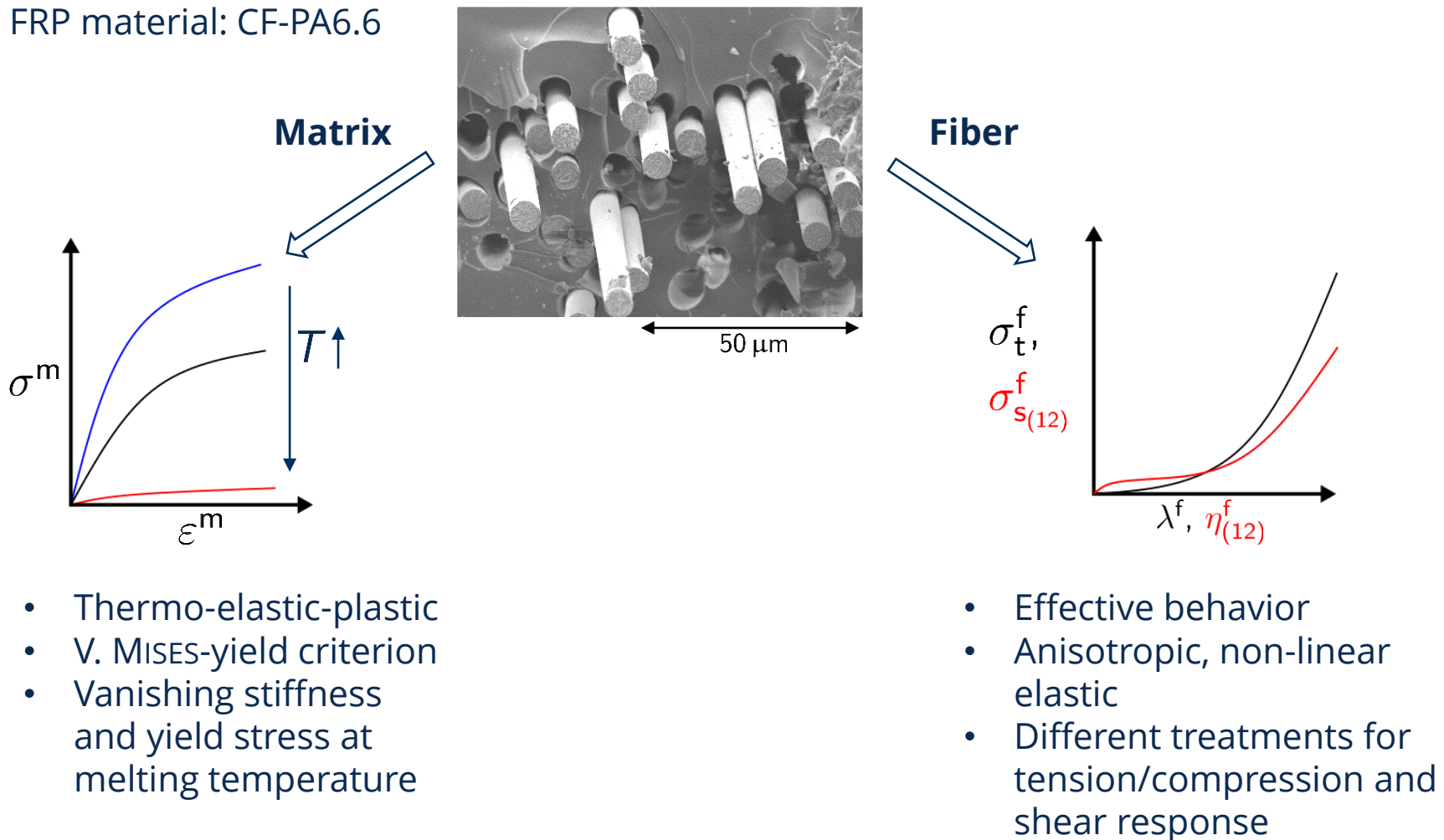


- Thermo-elastic-plastic
- V. MISES-yield criterion
- Vanishing stiffness and yield stress at melting temperature

Material modeling and parametrization

➤ FRP (*MAT249-Reinforced_Thermoplastic)

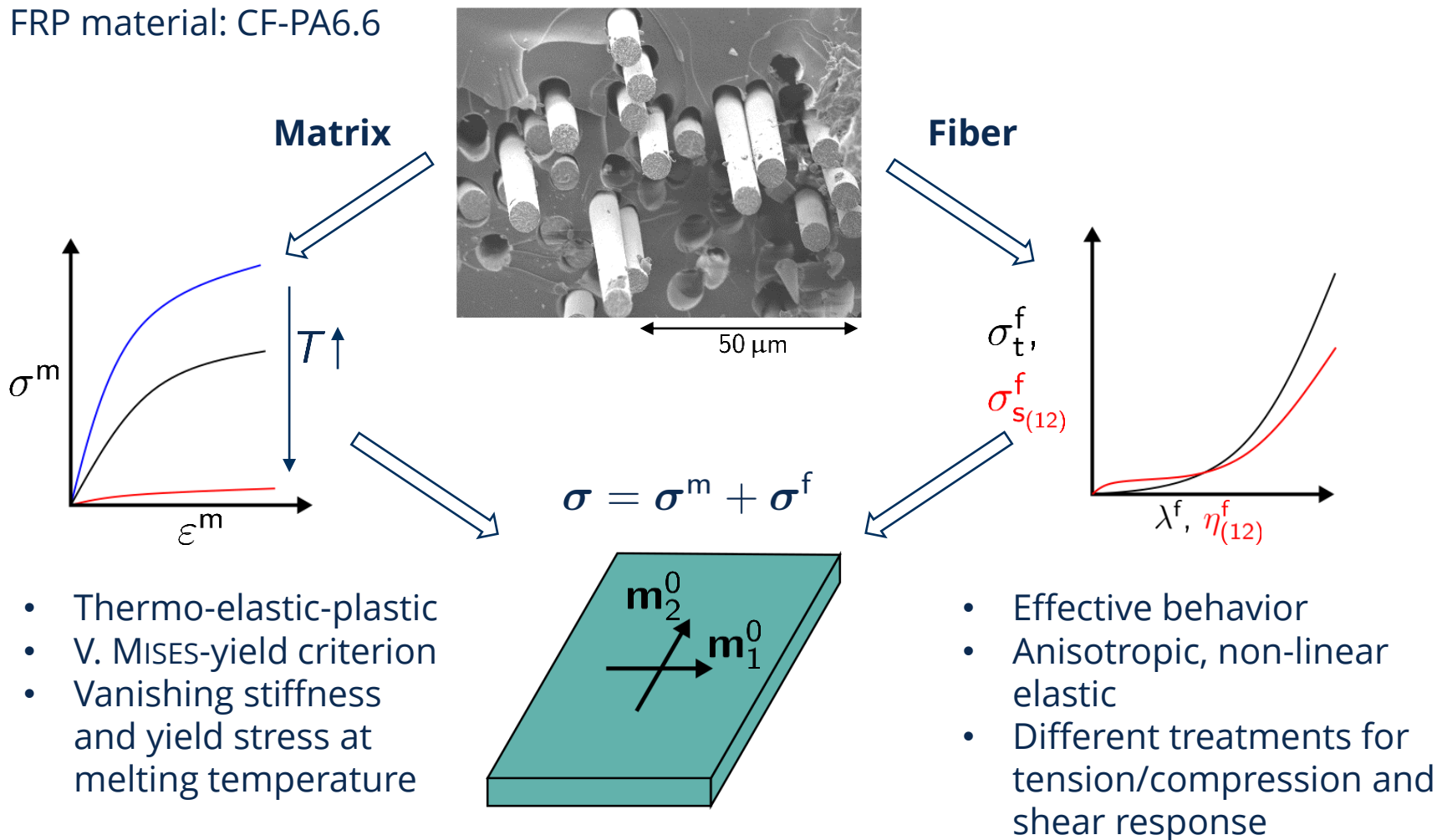
FRP material: CF-PA6.6



Material modeling and parametrization

➤ FRP (*MAT249-Reinforced_Thermoplastic)

FRP material: CF-PA6.6

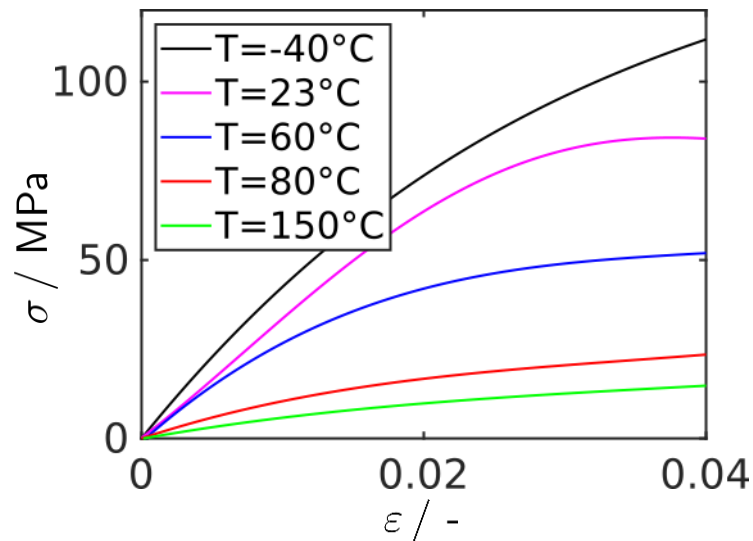


Material modeling and parametrization

➤ FRP (*MAT249-Reinforced_Thermoplastic)

Temperature dependent material behavior of polyamide 6.6 (PA6.6)

Stress-strain curves ($-40\text{ °C} < T < 150\text{ °C}$) of PA 6.6 from database: "Campusplastics"



- Determination of stiffnesses and initial yield stresses by EHRENSTEIN⁴⁾
- Empirical extrapolation approach⁵⁾ for flow rules at higher temperatures

4) Ehrenstein 2001

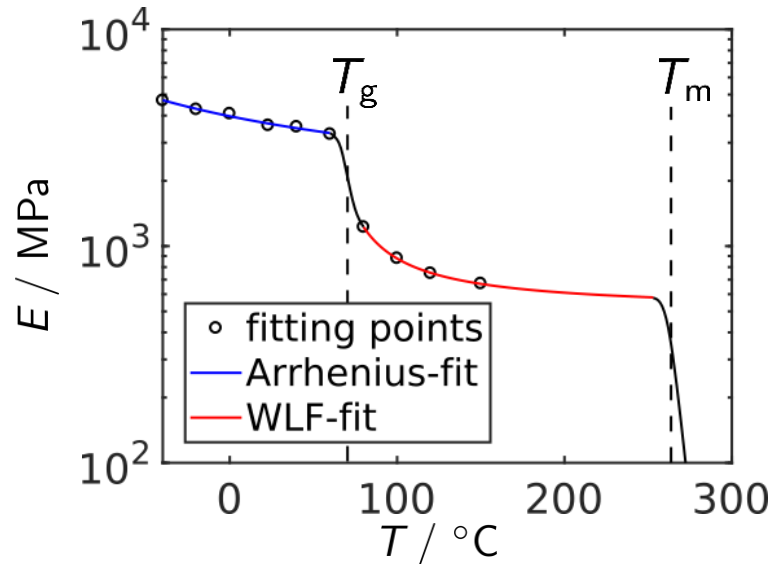
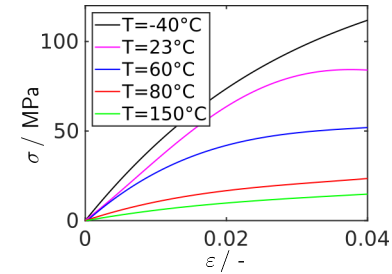
5) Behrens et al. 2015

Material modeling and parametrization

➤ FRP (*MAT249-Reinforced_Thermoplastic)

Temperature dependent material behavior of polyamide 6.6 (PA6.6)

Stress-strain curves ($-40\text{ }^{\circ}\text{C} < T < 150\text{ }^{\circ}\text{C}$) of PA 6.6 from database: "Campusplastics"



4) Ehrenstein 2001

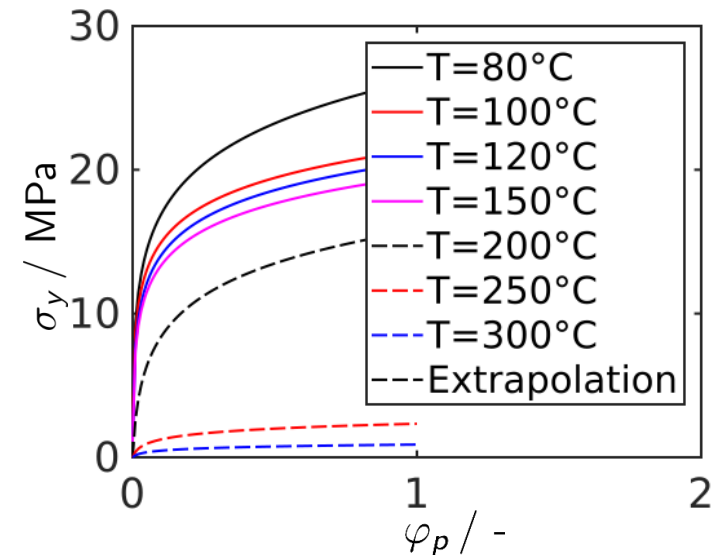
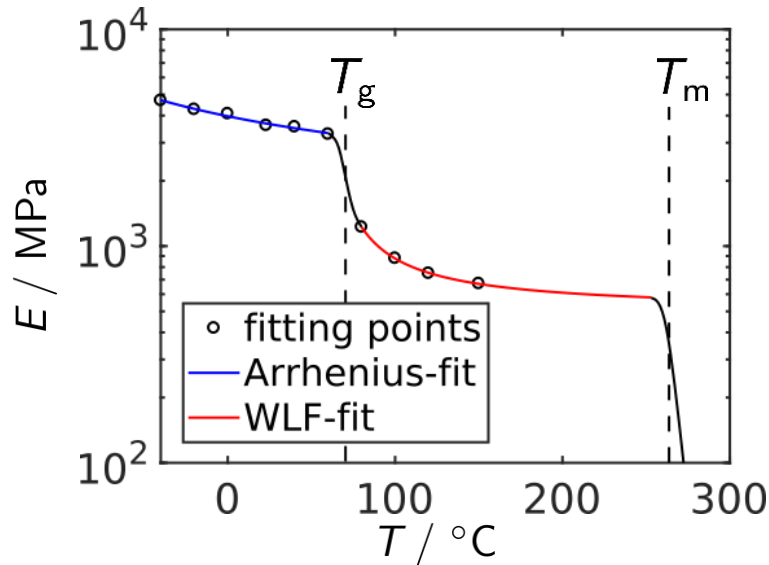
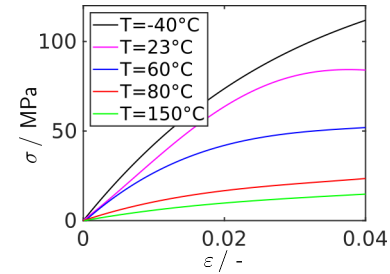
5) Behrens et al. 2015

Material modeling and parametrization

➤ FRP (*MAT249-Reinforced_Thermoplastic)

Temperature dependent material behavior of polyamide 6.6 (PA6.6)

Stress-strain curves ($-40\text{ °C} < T < 150\text{ °C}$) of PA 6.6 from database: "Campusplastics"



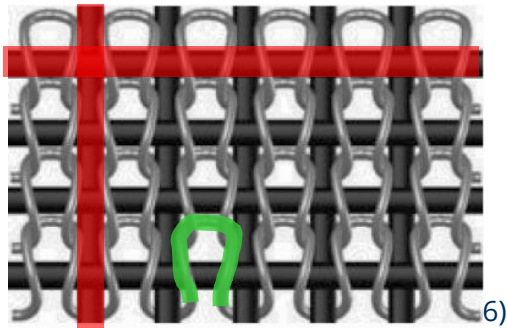
4) Ehrenstein 2001

5) Behrens et al. 2015

Material modeling and parametrization

➤ FRP (*MAT249-Reinforced_Thermoplastic)

Textile material:
biaxial reinforced
weft-knitted fabric



Reinforcement yarns:
carbon fiber (CF) &
polyamide 6.6 (PA6.6)

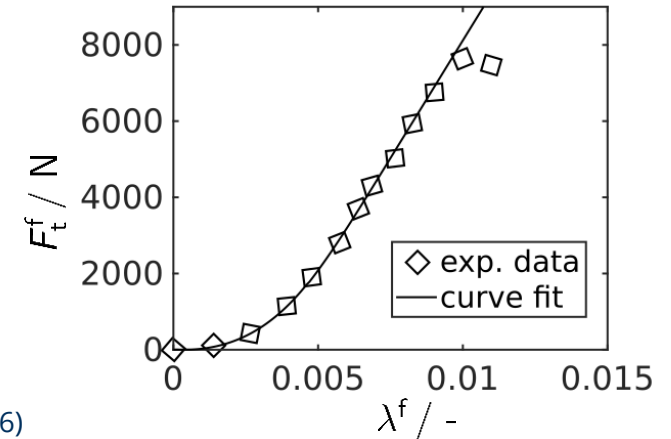
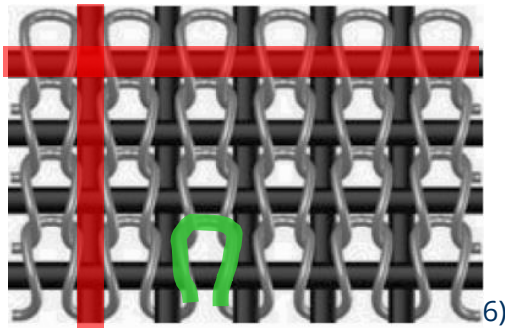
Knitting yarns:
glass fiber (GF) & PA6.6

6) TU Dresden, ITM

Material modeling and parametrization

➤ FRP (*MAT249-Reinforced_Thermoplastic)

Textile material:
biaxial reinforced
weft-knitted fabric



Reinforcement yarns:
carbon fiber (CF) &
polyamide 6.6 (PA6.6)

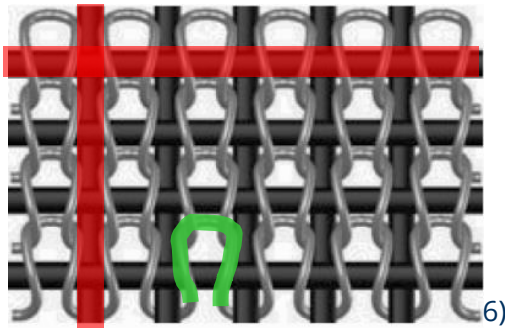
Knitting yarns:
glass fiber (GF) & PA6.6

6) TU Dresden, ITM

Material modeling and parametrization

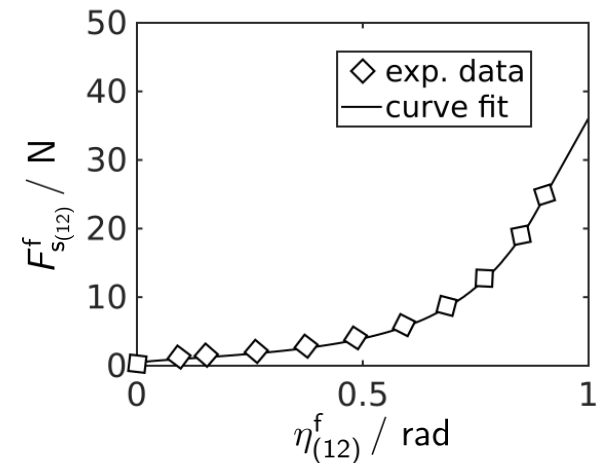
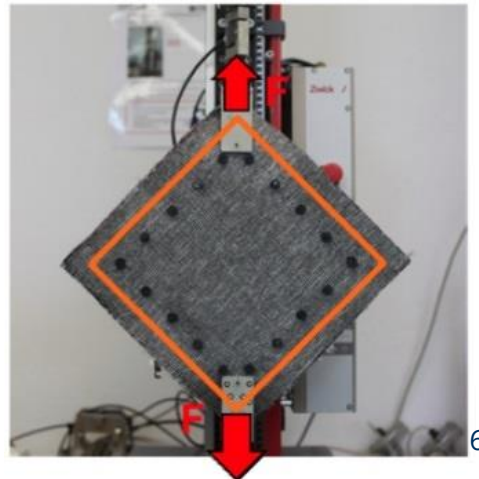
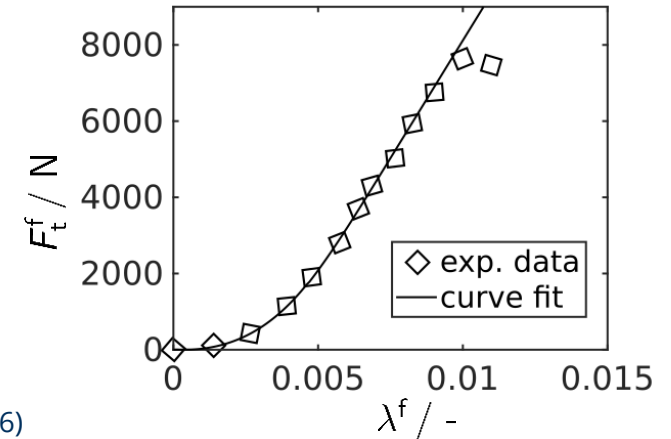
➤ FRP (*MAT249-Reinforced_Thermoplastic)

Textile material:
biaxial reinforced
weft-knitted fabric



Reinforcement yarns:
carbon fiber (CF) &
polyamide 6.6 (PA6.6)

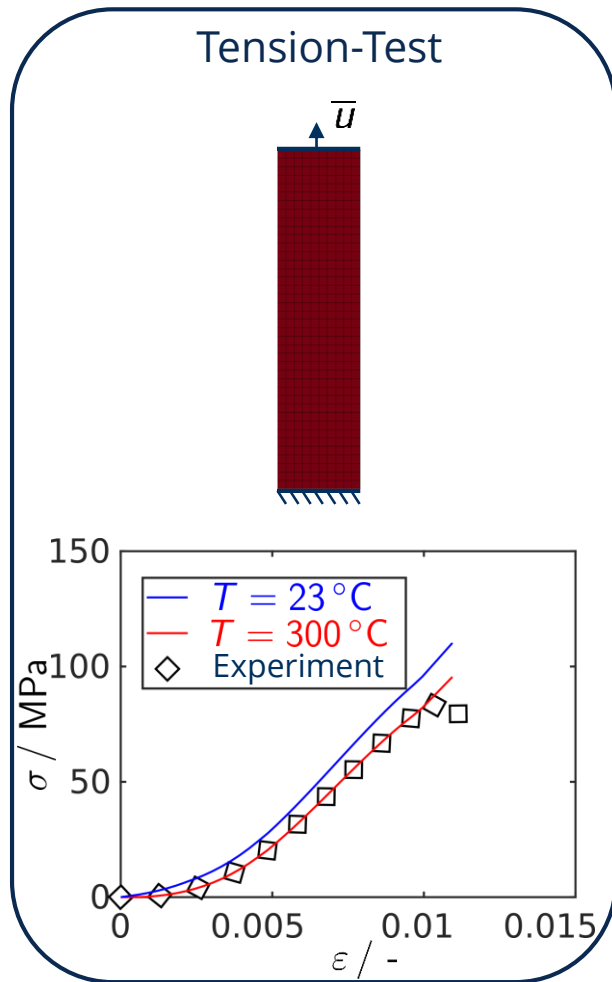
Knitting yarns:
glass fiber (GF) & PA6.6



6) TU Dresden, ITM

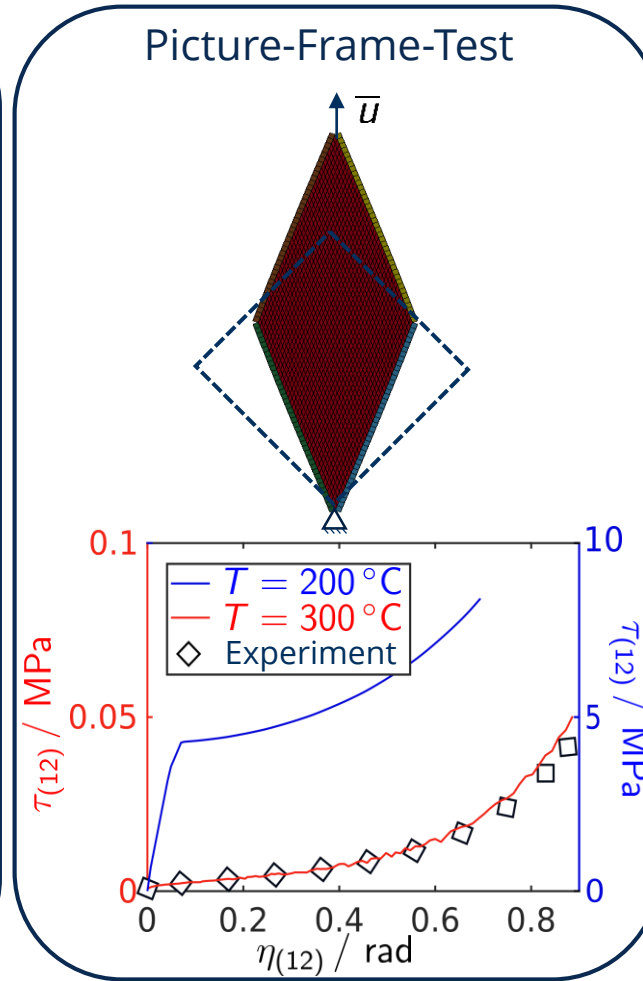
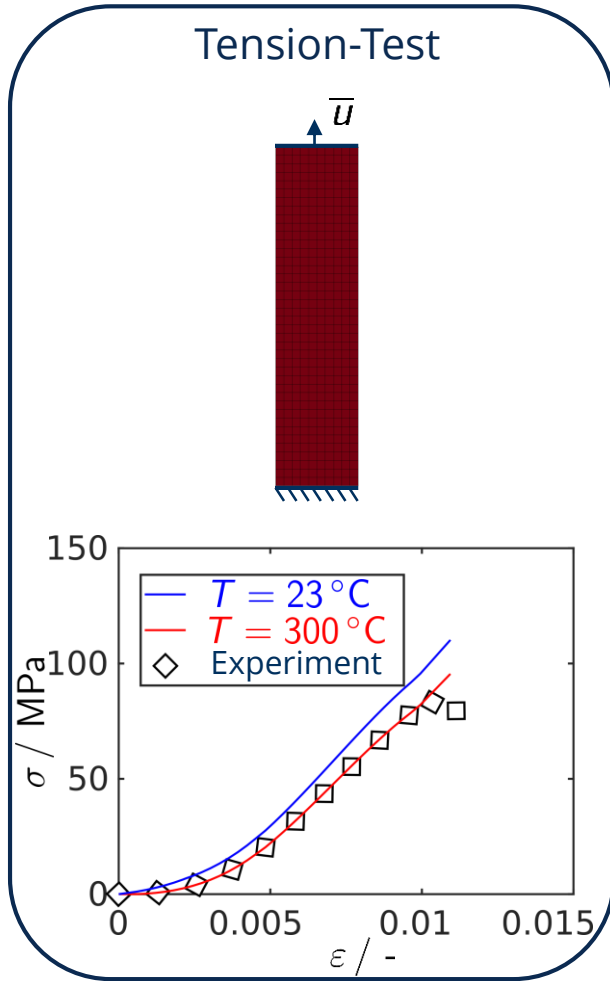
Material modeling and parametrization

➤ FRP (*MAT249-Reinforced_Thermoplastic)



Material modeling and parametrization

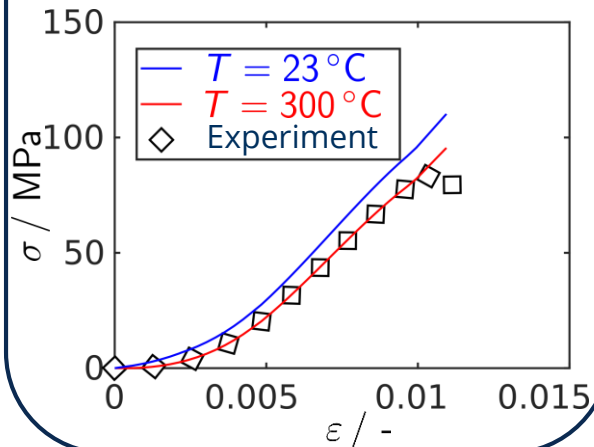
➤ FRP (*MAT249-Reinforced_Thermoplastic)



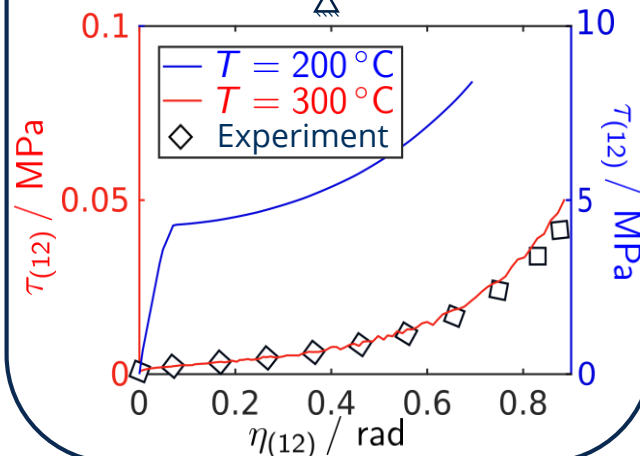
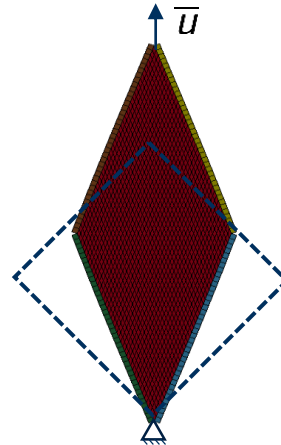
Material modeling and parametrization

➤ FRP (*MAT249-Reinforced_Thermoplastic)

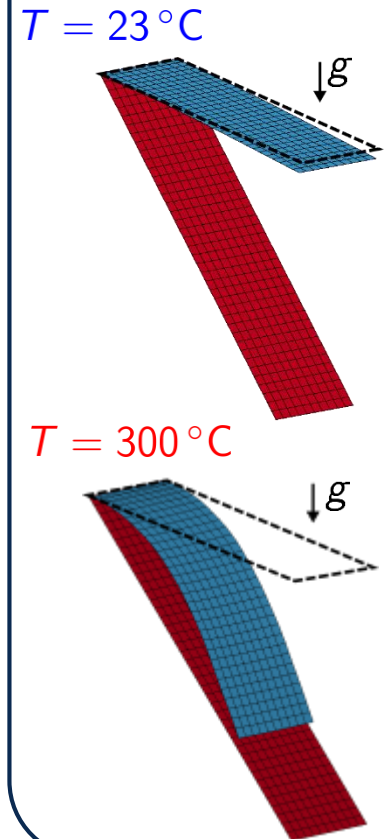
Tension-Test



Picture-Frame-Test



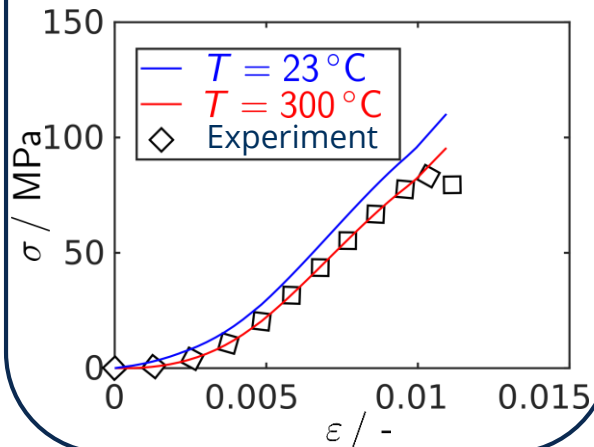
Cantilever-Test



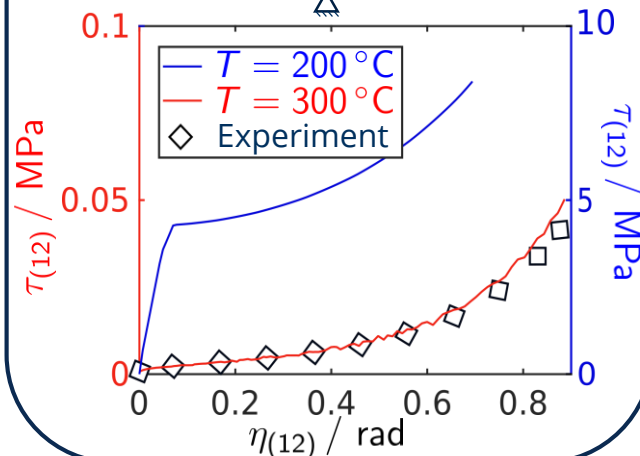
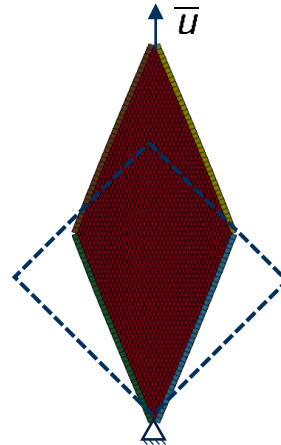
Material modeling and parametrization

➤ FRP (*MAT249-Reinforced_Thermoplastic)

Tension-Test

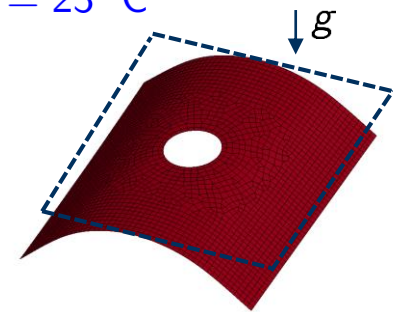


Picture-Frame-Test

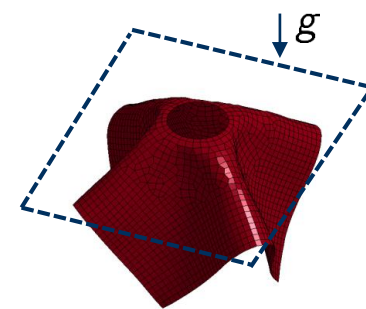


Multiaxial bending

$T = 23^\circ\text{C}$



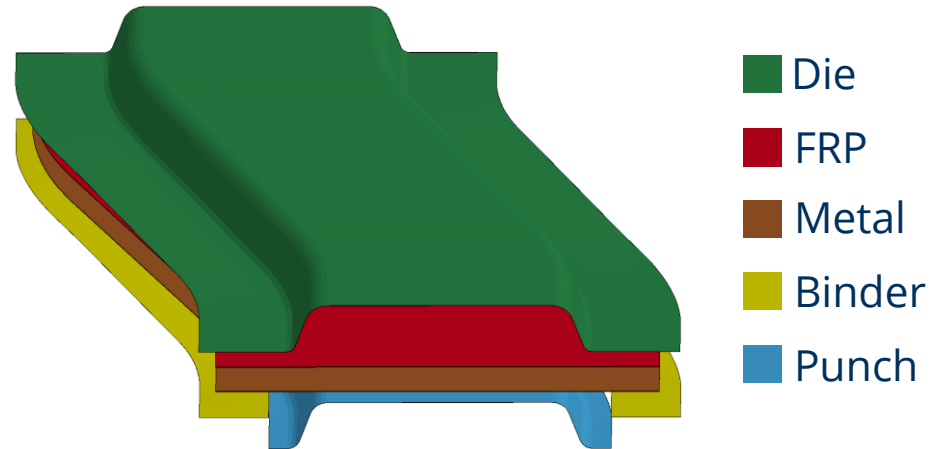
$T = 300^\circ\text{C}$



Process simulation and results

➤ Process modeling

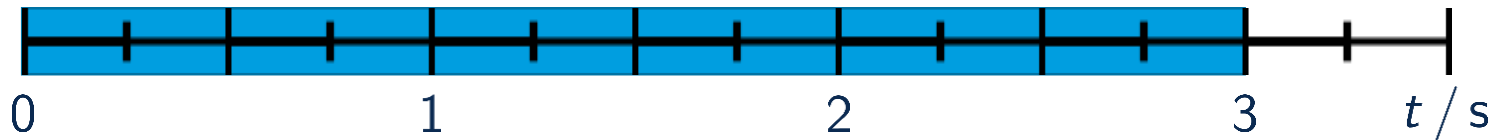
Parameter	Value
T_0^{FRP}	300 °C
T_0^{Metal}	220 °C
T^{Tool}	150 °C (const.)
t_{Process}	3 s
n_{Elements}	$\approx 2 \cdot 40000$
h_{Elements}	$\approx 2 \text{ mm}$
Δt_{mech}	$\approx 1 \cdot 10^{-6} \text{ s}$
Δt_{therm}	$\approx 1 \cdot 10^{-4} \text{ s}$



Step 1: Heating

Step 2: Forming

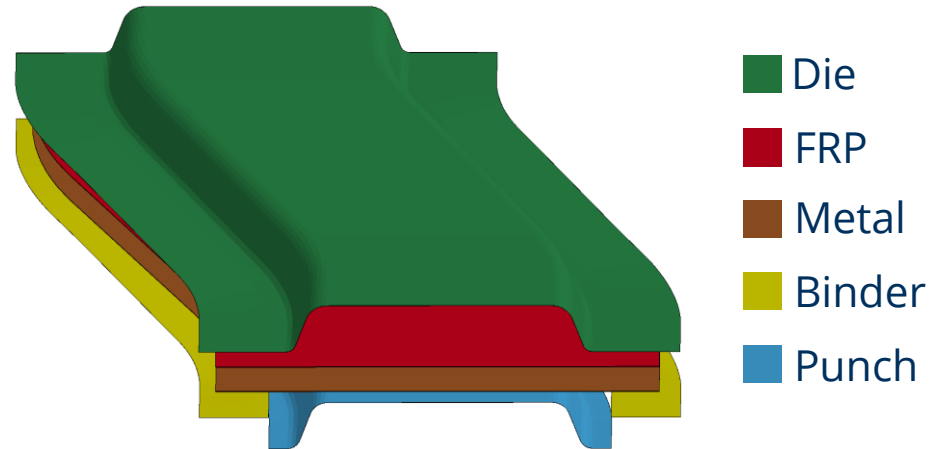
Step 3: Cooling



Process simulation and results

➤ Process modeling

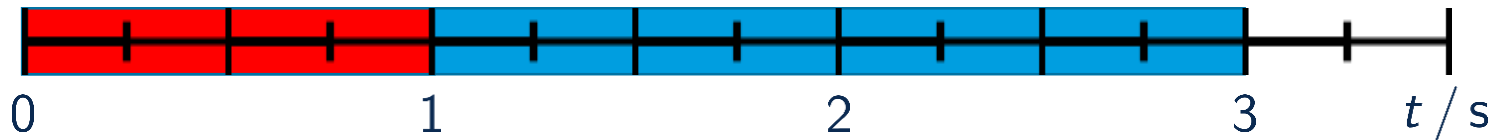
Parameter	Value
T_0^{FRP}	300 °C
T_0^{Metal}	220 °C
T^{Tool}	150 °C (const.)
t_{Process}	3 s
n_{Elements}	$\approx 2 \cdot 40000$
h_{Elements}	$\approx 2 \text{ mm}$
Δt_{mech}	$\approx 1 \cdot 10^{-6} \text{ s}$
Δt_{therm}	$\approx 1 \cdot 10^{-4} \text{ s}$



Step 1: Heating

Step 2: Forming

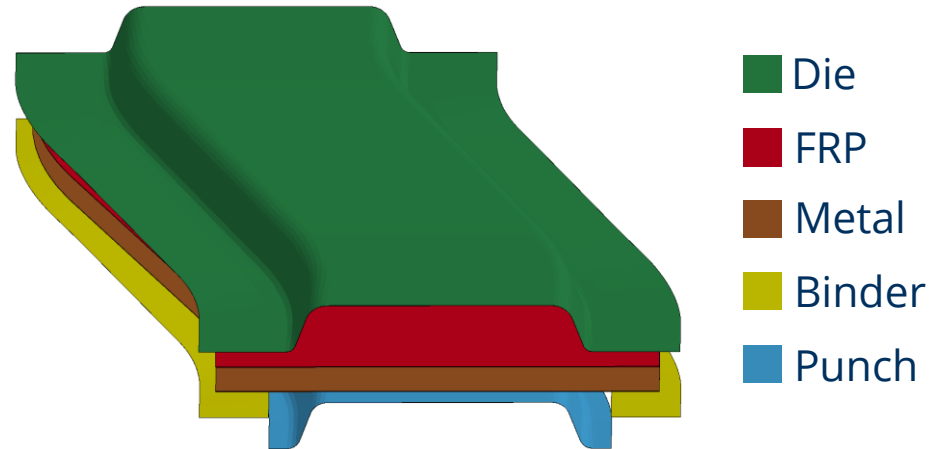
Step 3: Cooling



Process simulation and results

➤ Process modeling

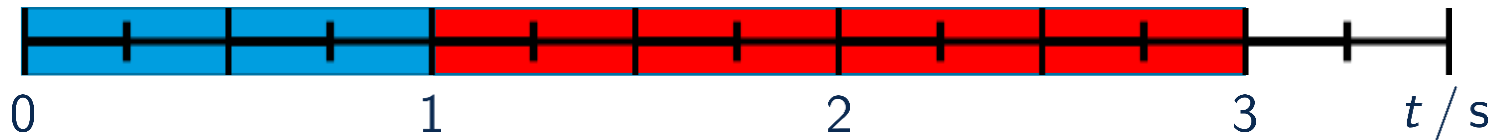
Parameter	Value
T_0^{FRP}	300 °C
T_0^{Metal}	220 °C
T^{Tool}	150 °C (const.)
t_{Process}	3 s
n_{Elements}	$\approx 2 \cdot 40000$
h_{Elements}	$\approx 2 \text{ mm}$
Δt_{mech}	$\approx 1 \cdot 10^{-6} \text{ s}$
Δt_{therm}	$\approx 1 \cdot 10^{-4} \text{ s}$



Step 1: Heating

Step 2: Forming

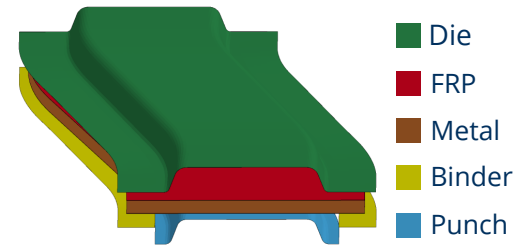
Step 3: Cooling



Process simulation and results

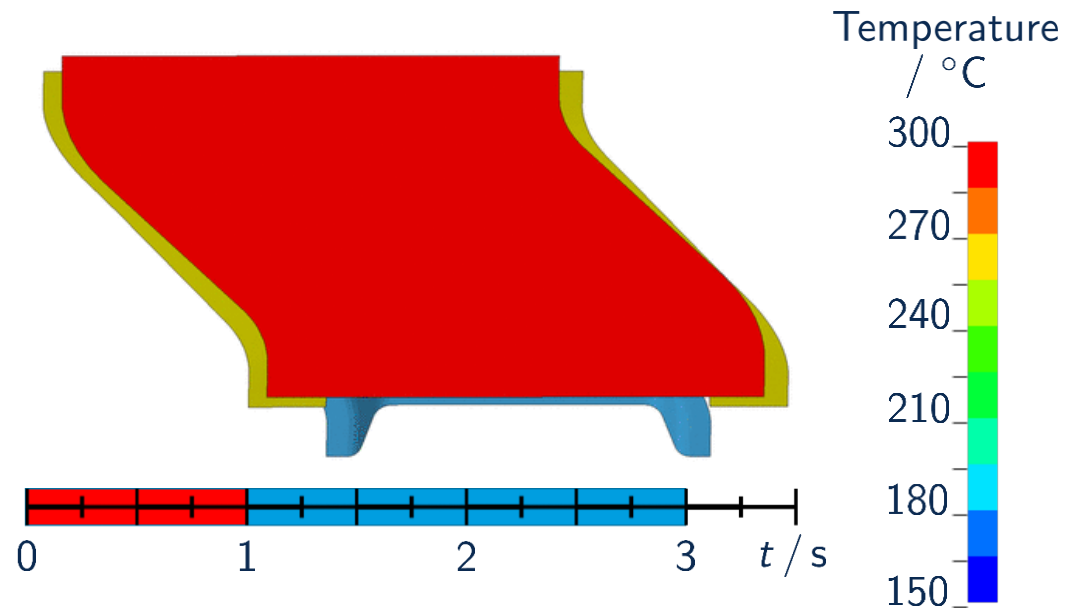
➤ Process modeling and results

Parameter	Value
t_{Forming}	1 s
v_{Punch}	50 mm/s
F_{Binder}	10 kN
t_{Holding}	2 s



Parameter	Value
μ, μ_0	0.15
h_{cont}	1000 W/m ² K
L_{min}	1 mm

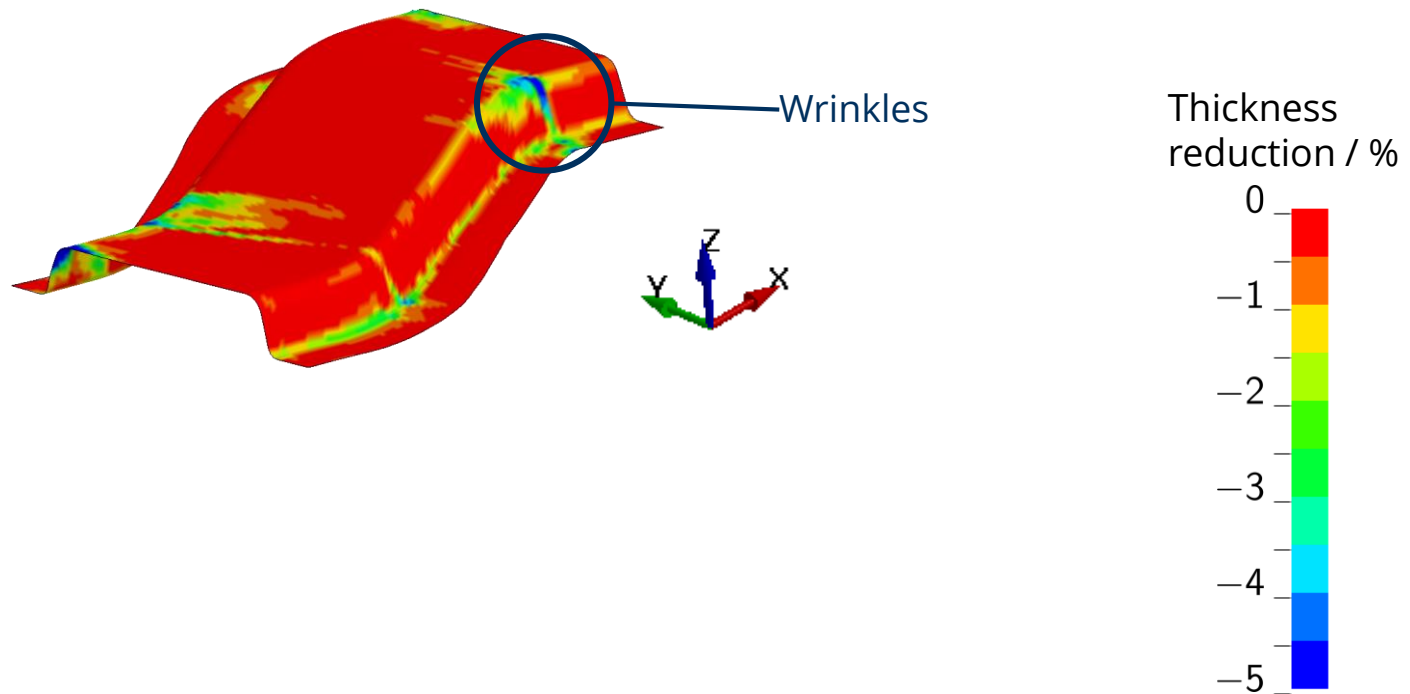
Parameter	Value
c_p^{FRP}	1.7 J/gK
k^{FRP}	0.23 W/mK
$\alpha_{\text{th}}^{\text{FRP}}$	$0.3 \cdot 10^{-6} \text{ K}^{-1}$
c_p^{DC05}	460 J/gK
k^{DC05}	50 W/mK
$\alpha_{\text{th}}^{\text{DC05}}$	$1 \cdot 10^{-6} \text{ K}^{-1}$



Process simulation and results

➤ Results

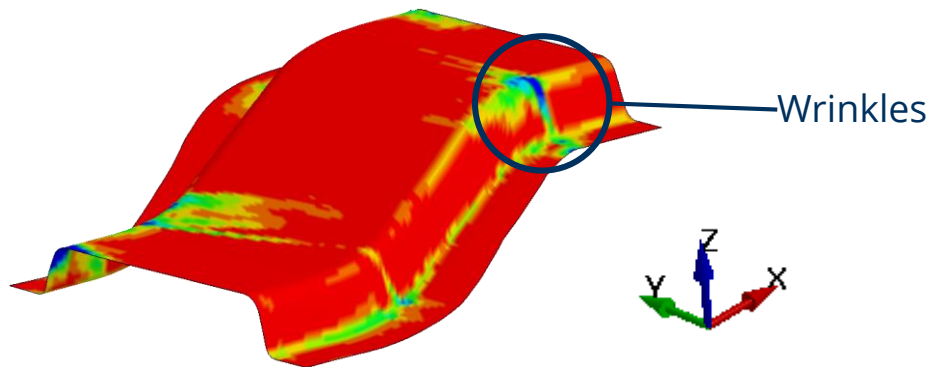
Formation of wrinkles due to missing tensile forces in x-direction



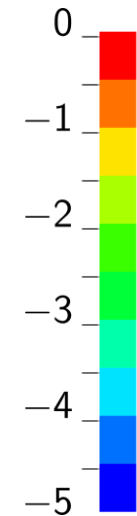
Process simulation and results

➤ Results

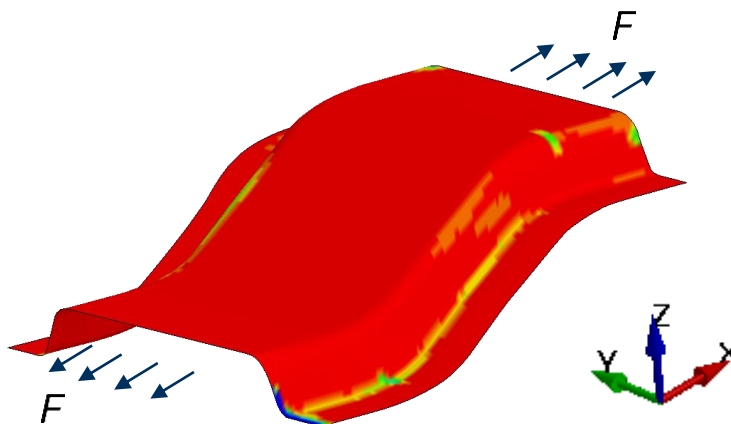
Formation of wrinkles due to missing tensile forces in x-direction



Thickness reduction / %

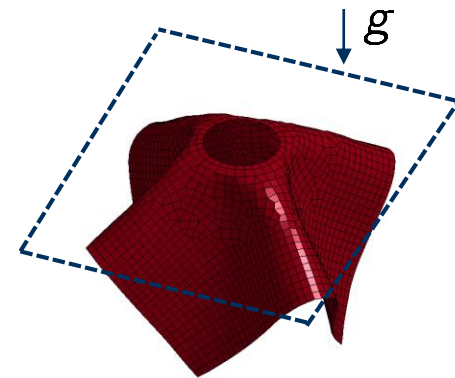


Application of additional loads in x-direction reduces defects



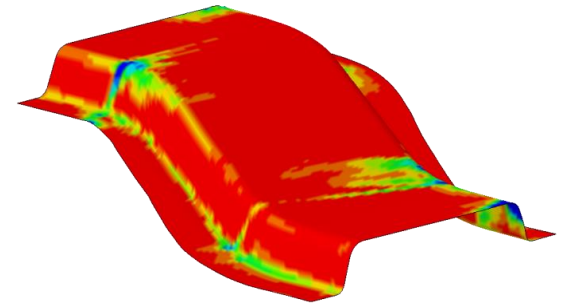
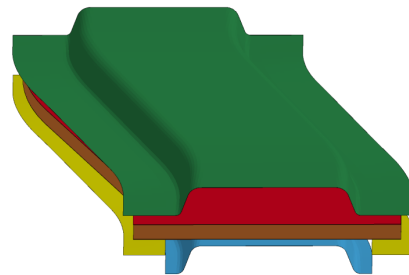
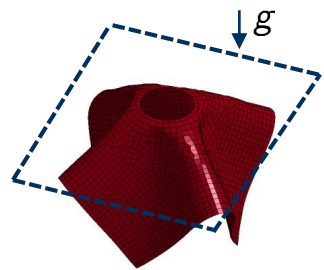
Summary

- ✓ Formulation for temperature dependent forming behavior of pre-consolidated fiber-reinforced thermoplastics



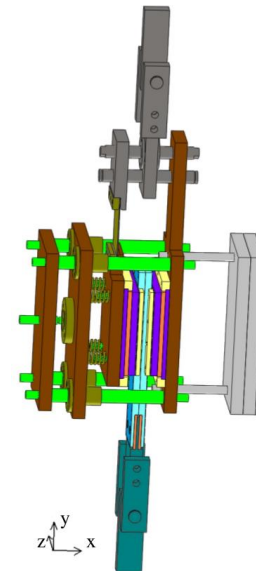
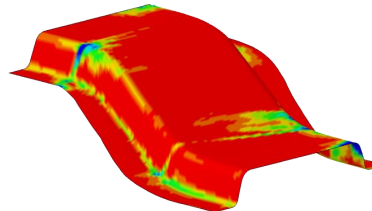
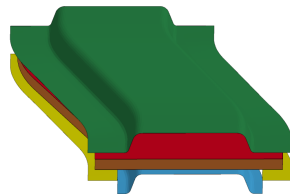
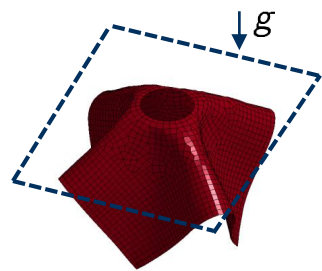
Summary

- ✓ Formulation for temperature dependent forming behavior of pre-consolidated fiber-reinforced thermoplastics
- ✓ Numerical modeling of thermoforming process



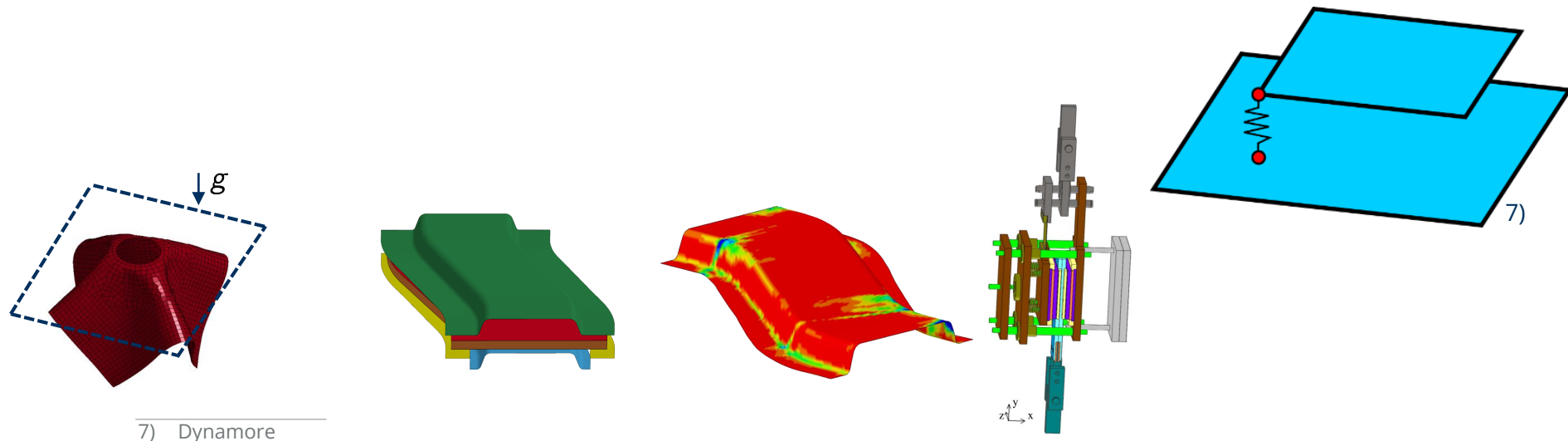
Summary

- ✓ Formulation for temperature dependent forming behavior of pre-consolidated fiber-reinforced thermoplastics
- ✓ Numerical modeling of thermoforming process
- Validation of material model (FRP) and determination of additional parameters



Summary

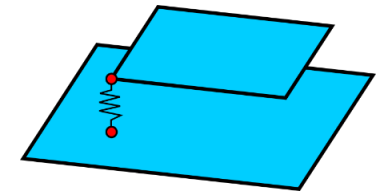
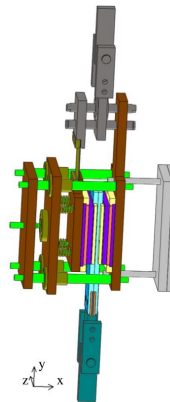
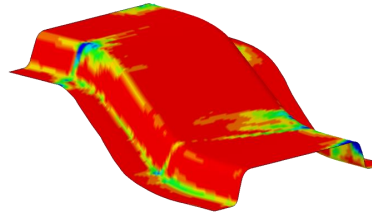
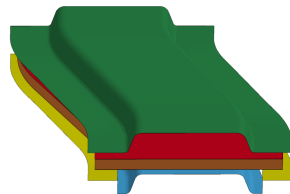
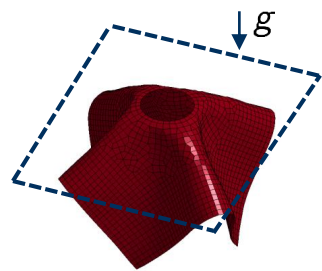
- ✓ Formulation for temperature dependent forming behavior of pre-consolidated fiber-reinforced thermoplastics
- ✓ Numerical modeling of thermoforming process
 - Validation of material model (FRP) and determination of additional parameters
 - Considering of delamination



7) Dynamore

Summary

- ✓ Formulation for temperature dependent forming behavior of pre-consolidated fiber-reinforced thermoplastics
- ✓ Numerical modeling of thermoforming process
 - Validation of material model (FRP) and determination of additional parameters
 - Considering of delamination
 - Parameter studies of thermoforming



7) Dynamore